



# Beverly Rotary Club Sprocket Newsletter

Oct 15, 2020  
Issue 16



**SEE DISEMBODIED HEADS ON ZOOM!!!!  
WATCH IN HORROR AS PEOPLE EAT LUNCH!**

# NIGHT OF THE LAWYER JOKE ROTARY REVENGE!

**HALLOWEEN  
EDITION #2**



his gaze alone will kill you

- NO INSURANCE PERSON JOKES!
- NO BANKER PERSON DIGS!
- NO ARCHITECT HAUNTING!

**JUST TERROR**  
WHICH GNAWS AT YOUR BEING!

**A STORY  
SO DARK, SO EVIL,  
YOU'LL HOPE YOU  
MISS A ROTARY  
ZOOM MEETING!**

**OVERLOOKED AS A  
SUPREME COURT  
JUSTICE, SICK OF  
LAWYER JOKES, HIS  
WRATH WILL MAKE  
YOU RUN FOR THE  
DOOR IN FRIGHT.**

**THEY CALL HIM  
HANDLY, YOU'LL  
CALL HIM AS HE  
TRULY IS,  
THE DEVIL'S  
LAWYER!**



Michael C. Jones  
President

www.mcjins.com

Phone 978-338-4670  
Fax 978-522-8388  
Mobile 978-828-5822

409A Cabot Street  
Beverly, MA 01915  
mike@mcjins.com



978-922-2149

Commodore Plaza,  
47 Enon Street  
Beverly, MA 01915-3601



Alan L. Temkin  
Financial Planner  
781-876-4175  
atemkin@temkinfinancial.com

www.temkinfinancial.com

301 Edgewater Place, Suite 200  
Wakefield, MA 01880

Alan L. Temkin is a registered representative of and offers securities, investment advisory and financial planning services through MML Investors Services, LLC. Member SIPC. Temkin Financial Group, LLC is not a subsidiary or affiliate of through MML Investors Services, LLC, or its affiliated companies. 200 Clarendon Street, 19th and 25th Floor, Boston, MA 02116. 617-585-4500. CRN202111-256179



The leading provider of custom-designed  
workforce training programs.

NORTH SHORE COMMUNITY COLLEGE

Corporate Training  
SOLUTIONS *Train your people.  
Transform your company.*

Dianne Palter Gill, Ed.D.  
978-236-1225  
dpalterg@northshore.edu

corporate.northshore.edu



Established in 1929 & Still Growing!

Auto • Home • Business • Health • Life

Richard F. Mooney Jr.  
president

306 Cabot Street, Beverly, MA  
(978) 922-6600

## Last weeks news, Thursday Oct 8.20

Meeting was called to order by President Marshall at 12:15 from the harem at the Palace.

Pledge of Allegiance was led by Larry Herman, followed by Irving Berlin singing "God Bless America" on the Ed Sullivan show. Freddie and Diane were seen in the third row of the chorus.

The invocation was led by the revered Thad Siemasko.

"Happy Birthday" was sung for Nobody.

The following were guests of the Beverly Rotary club:

Kristen Rayne, who was this week's speaker

### Announcements:

Rachel Hand - Tricks, Treats and Trivia reminder

### Sergeant-at-Arms - Thad did double-duty this week

Fines and Happy Bucks

Late fees - \$5 on the honor system

Larry Herman for being Larry

Al Temkin for just being Al

Ann Curry announced a grant for the STEM program for teaching kids robotics

Diane for having coffee on the deck with Rotary friends

Jillian - 2 Rotarians supported her daughter's fundraising efforts

Julie Hired a virtual ministry associate for FBC. It's unclear if she will be filling in for Jack Good from time to time for Rotary invocations.

Brian Murphy - Displaying Artwork at Rockport and Marblehead virtual art shows

### Lawyer Jokes

What did the lawyer name his daughter? - Sue

How many lawyers to change a lightbulb? - none, they'd rather keep their clients in the dark

What's diff good and bad lawyer? - Bad lawyer can make a case last for weeks, a good one will make it drag on for years

How do you make a group of lawyers smile for the camera? - say "FEES"

What do you call a priest who becomes a lawyer? - father in law

Why did the lawyer cross the road? - she had an easement

What's the difference between a lawyer and referee? - the referee doesn't get paid for a longer fight

How was copper wire invented? - 2 lawyers fighting over a penny

Marshall took the brunt of the abuse as he was the only lawyer present.

### Today's Guest Speaker :

Kristen Rayne who is associated with the Workforce Development Grant Program administered by North Shore Community College

Gives away money to employers to train existing employees

Last year, the program funded \$20 Mil - 700 Employers 20,000 employees

The program is funded through state unemployment taxes. Companies that pay into the unemployment system are eligible to receive funding

### There are 3 main programs

Express program - 50% reimbursement of "off the shelf" training (existing courses)

Small Business Direct - Free training in a set list of courses

General Program - up to \$250,000 for customized training programs

Details about the programs can be found here: <http://workforcetrainingfund.org/about-us/overview/>

Kristen is happy to answer questions about the program. Here is her contact info.

krayne@commcorp.org 617-717-6915

Meeting Adjourned promptly at 1:00

Scribe of the week: Nick Biancucci



### Last Weeks Speaker

Kristen Rayne who is associated with the Workforce Development Grant Program administered by North Shore Community College. Details follow the arrow.



## True to our Communities



We are proud to support the  
Beverly  
Rotary Club

**Eastern Bank**

# 100th Year for Beverly Rotary

If you have any ideas of how we can celebrate our 100th year on this earth. At this point anything is fine. Send your idea to either Moiph or Jackie and we'll throw it in the hopper for further thought. We are the largest club in our district, let's set the bar high for how to social distance ideas or anything else if we can.



## Tricks, Treats and Trivia

Come on Party People!!! (As Karen Nascebene would say) You only have until FRIDAY to register for our Fun Trivia Night!!

We have 4 teams BUT only two of the groups are officially registered. GO to this link to do that : <https://beverlyrotaryclub.ejoinme.org/MyEvents/TRICKSTREATSTRIVIA/tabid/1182650/Default.aspx>  
If you want to just let me know your team, that's okay and then you can register online. Remember to pick a name for your team. See the flyer attached at end of sprocket..... LET'S HAVE SOME FUN!!!!

**Thursday, October 29th 7-9 PM**

### TRICKS TREATS TRIVIA

Teams can be 4 or 5 people  
prices will be \$15 for 1 player, \$25 for 2 players, \$50 for 4 players or \$65 for 5 players. Sign up at link on bottom

RSVP by Friday, October 16th to [appy57@me.com](mailto:appy57@me.com)

Prizes will be given for first place, best costume, and last place  
Snack and drinks are on your own  
Come up with fun team names

Rotary Beverly, MA

Thank you all for your support. This is going to be scary fun!

<https://beverlyrotaryclub.ejoinme.org/MyEvents/TRICKSTREATSTRIVIA/tabid/1182650/Default.aspx>



**Matthew H. Piaker,**  
JD, LLM, AIF®

Tel: 978-927-3123  
Email: [mpiaker@cfaemail.com](mailto:mpiaker@cfaemail.com)  
100 Cummings Center, Ste. 207P  
Beverly, MA 01915  
[www.capitolfinancialadvisors.com](http://www.capitolfinancialadvisors.com)



Securities and Advisory Services offered through Commonwealth Financial Network, Member FINRA/SIPC. Advisory services offered by Capitol Financial Advisors, a registered investment adviser, are separate and unrelated to Commonwealth.

## Montserrat College of Art

where creativity works®

visual art & design education  
continuing education for all ages  
public art galleries

beverly, ma | [montserrat.edu](http://montserrat.edu)

\*1,986 lbs (from RI); 1,930 lbs (RI); 1,895 lbs (NH)

## Helping Local Businesses Thrive.

To contact one of our commercial lenders call (978) 573-1300 or visit [northshore-bank.com/lenders](http://northshore-bank.com/lenders).

**NORTH SHORE BANK**

Well north of your expectations.™  
[northshore-bank.com](http://northshore-bank.com) | [f](#) [t](#) [@](#) [i](#) [n](#) [b](#) [i](#) [n](#)

Member FDIC Member DIF Equal Housing Lender



## Worldwide Adventures of Handly

I was ballooning across Cappadocia one autumn - the landscape looks like Dr. Seuss on moonshine - when thoughts of the Topsfield Fair drifted across my mind... Wanderlust mixed with melancholy, as I recalled visions of pumpkin behemoths from years past.

"We'll always have vintage 2012, Carla," I sighed to my co-pilot, "The year of the first one-ton pumpkin." I snapped out of my reverie, "GAWK! Take charge of the ship and start our descent." Anatolia is one of the richest breadbaskets in the world. Of course! I will make it my mission to share the joy and awe of THE LARGEST CUCURBIT CONTEST with the unsuspecting inhabitants below. For a small finder's fee, of course.

Our landing was graceful but my dreams of glory were dashed, as there was not a gourd to be found on the horizon. Pomegranates, quince, and figs as far as the eye could see. Did I mention pistachios? No fruit or vegetable promising the potential to be grown to grotesque proportions. As I say, when life hands out pomegranates, make pomegranate martinis and so we did, spreading out a picnic blanket and cracking a few pistachios.

Until we meet again, let me ask you: do you know what the largest pumpkins at the Topsfield Fair weighed this year? Over or under 2,000 pounds? Look for the answer elsewhere on this page.\*

Until our next adventure.



*Handly*



**Eagle Strategies LLC**



**Edward F. Cahill, J.D., CFP®, CLU®, ChFC®**  
Financial Adviser

(978) 927-9352 • 306 Cabot Street, Beverly, MA 01915  
[ecahill@ft.newyorklife.com](mailto:ecahill@ft.newyorklife.com) • [www.edwardfcahill.com](http://www.edwardfcahill.com)

Agent, New York Life Insurance Company.  
Registered Representative, offering securities through NYLIFE Securities LLC,  
Member FINRA/SIPC, a Licensed Insurance Agency  
201 Jones Road, Fifth Floor, Waltham, MA 02451 • Tel: 781-647-4100  
Eagle Strategies and NYLIFE Securities are New York Life Companies

# SHUKA Associates Inc.

Real Estate Appraisal, Appraisal Review & Consulting

**John A. Shuka, MAI, SRA, AI-GRS**

8 Enon Street, Suite 1B  
Beverly, MA 01915  
978-921-1700

[www.shuka-associates.com](http://www.shuka-associates.com)

## CCI Reprographics

A Full Service Copy Center  
AV Rentals & Services

Serving Beverly Since 1979

Alex Ushakoff III - owner  
4th generation Rotarian

110 Cabot Street 978-922-3773  
Alex@CCIREpro.com



**Good Food, Drink & Fun**  
241 Jefferson Ave. Salem MA  
[www.tinwhistlesalem.com](http://www.tinwhistlesalem.com) • 978-741-1912

## Beverly Insurance

100 Cummings Center  
Suite 106N

Personal and Business  
Insurance

**978-524-8501**  
email:mike@beverlyins.com



Keep your facility clean and disinfected with  
JAN-PRO of Northeast Massachusetts.

**WE SPECIALIZE IN CLEANING & DISINFECTING:**

- Office Buildings
- Medical Facilities
- Daycares and Schools
- Restaurants
- Auto Dealerships
- ...and more!

**CALL FOR A FREE ESTIMATE!**

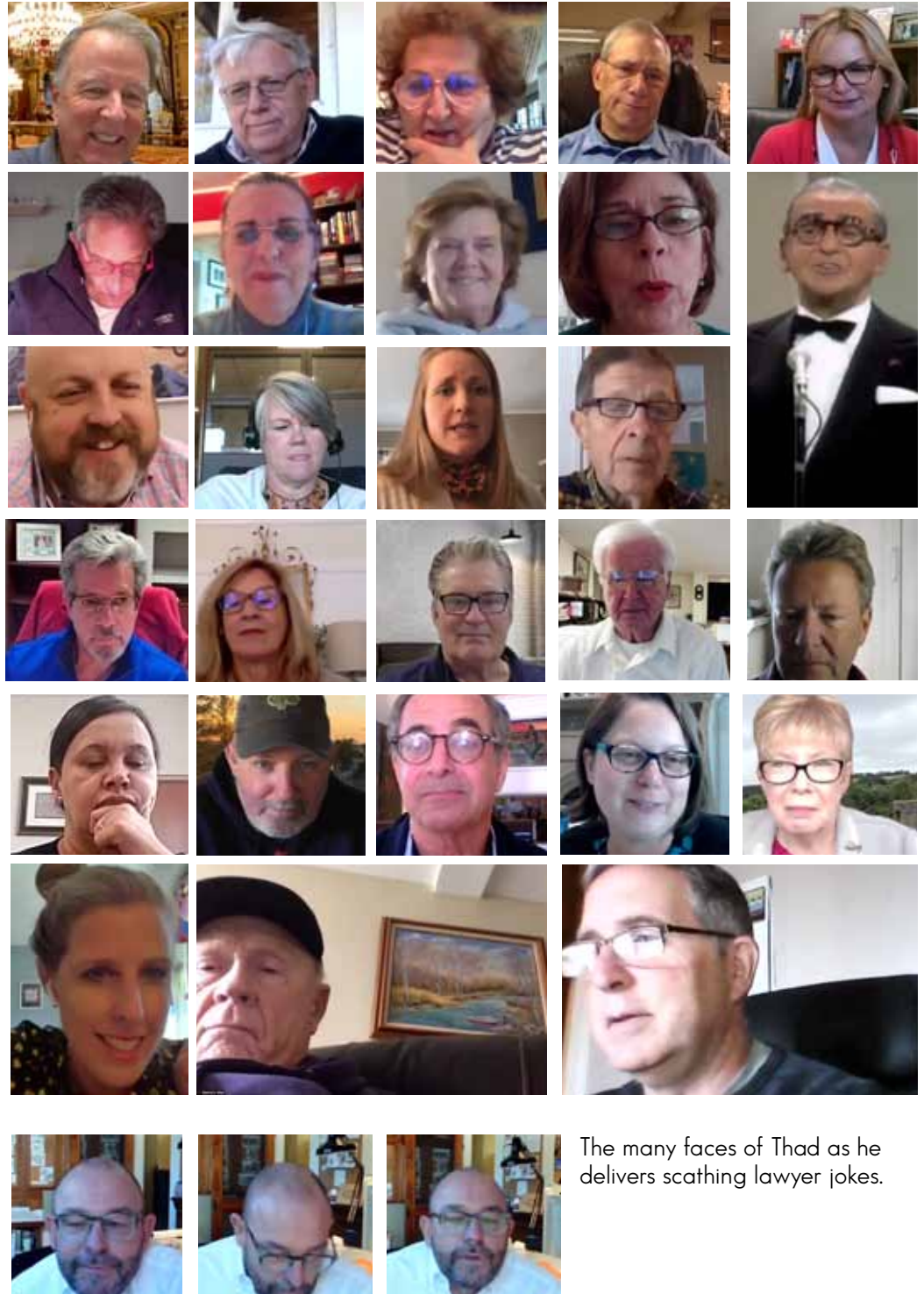
**781-482-7990 | [JAN-PRO.COM/MASS](http://JAN-PRO.COM/MASS)**



Mark Monahan  
Cleaning services provided by independently owned and operated JAN-PRO cleaning franchise.

# Zoom with Beverly Rotary

No big finger but lots of faces including Burl Ives (Irving Berlin)



The many faces of Thad as he delivers scathing lawyer jokes.



**Walter W Hartford, CFA**  
Financial Advisor

55 Market Street  
Suite 102  
Ipswich, MA 01938-2262  
978-356-3002

**Edward Jones**  
MAKING SENSE OF INVESTING  
[edwardjones.com](http://edwardjones.com)



**american family care®**  
**URGENT CARE**

50 DODGE STREET, BEVERLY MA 01915  
978.922.2171 | [AFCUrgentCareBeverly.com](http://AFCUrgentCareBeverly.com)

450 PARADISE RD, SWAMPSCOTT, MA 01907  
781.691.9366 | [AFCUrgentCareSwampscott.com](http://AFCUrgentCareSwampscott.com)



# How do you like them Apples? Other than by the ton.

Last Saturday an intrepid band of Rotarians traveled to the wilds of Waltham to work with BOSTON AREA GLEANERS to sort and pack surplus produce. Produce du jour was apples!

Whaaat iz deez GLEANING?

1 in 7 residents of Massachusetts lives with food insecurity.

More than 30% of the food grown on farms is never harvested.

BAG mobilizes volunteers to harvest surplus produce from over 80 participating farms in eastern Massachusetts and organizes the distribution of that produce to 2,000+ organizations: food banks, meal programs, and low income markets.

And for a few hours, Rotarians were sprockets in this huge enterprise (see what I did there?), repacking 8,910 pounds of apples - that's almost 4.5 tons for those that are counting at home. BAG, who likes to count, says that is equal to 35,640 servings of fresh produce. Some of this harvest may be delivered to BEVERLY BOOTSTRAPS!

[www.bostonareagleaners.org](http://www.bostonareagleaners.org)

## Photos clockwise from top left:

Almiris, John and Anne Curry, Bob, and unofficial Rotary wrangler, Marissa Gabriel - yup, Sue's daughter works for Boston Area Gleaners. Stay tuned: next year we'll book a work project early in the harvest season and hopefully on a North Shore farm. Those big bins hold 750+ pounds of apples. We bagged 'em all!

Almiris

LEAVE NO CROP BEHIND

Almiris and Anne

Bob and Pat and quality control

Yes, we have no bananas. Just apples: Galas and Kendalls. These pallets are loaded with 3-pound bags of apples. A full pallet, 6-layers high, weighs about 1,300 pounds. How do you like them apples?

Almiris and Anne and lotsa bagged apples

Photo credit to Paul Franceschi/BAG



**Thursday,  
October 29th  
7-9 PM**

# TRICKS TREATS TRIVIA

Teams can be 4 or 5 people  
prices will be \$15 for 1 player, \$25 for 2 players, \$50 for 4 players or  
\$65 for 5 players. Sign up at link on bottom



**RSVP by Friday, October 16th to [rappy57@me.com](mailto:rappy57@me.com)**



**Prizes will be given for first place, best costume, and last place  
Snack and drinks are on your own  
Come up with fun team names**



**Rotary**  
Beverly, MA



**Thank you all for your support.  
This is going to be scarily fun!**

<https://beverlyrotaryclub.ejoinme.org/MyEvents/TRICKSTREATSTRIVIA/tabid/1182650/Default.aspx>